



322m2 | 3 BEDROOMS | 2 BATHROOMS

**LIFESTYLE SERIES**

# Kakapo

Modern family home that would suit a site with great views.

4 bedrooms all facing the view and the master bedroom on the top storey. 2 living spaces with access to outdoors and great flow from the kitchen/dining to outdoors also. Feature fire inside and outside is just 1 of the great features of this home. Clad in plaster and cedar to blend into the environment. This home would be fantastic in the country or as holiday home near the beach or lake!

Kitchen comes standard with soft close drawers and engineered stone top in the main kitchen – scullery has an additional sink.

- Office
- Separate lounge
- Modern kitchen with large scullery
- Tiled showers
- Large windows to absorb view
- Nice flow to outdoors
- Outdoor fire

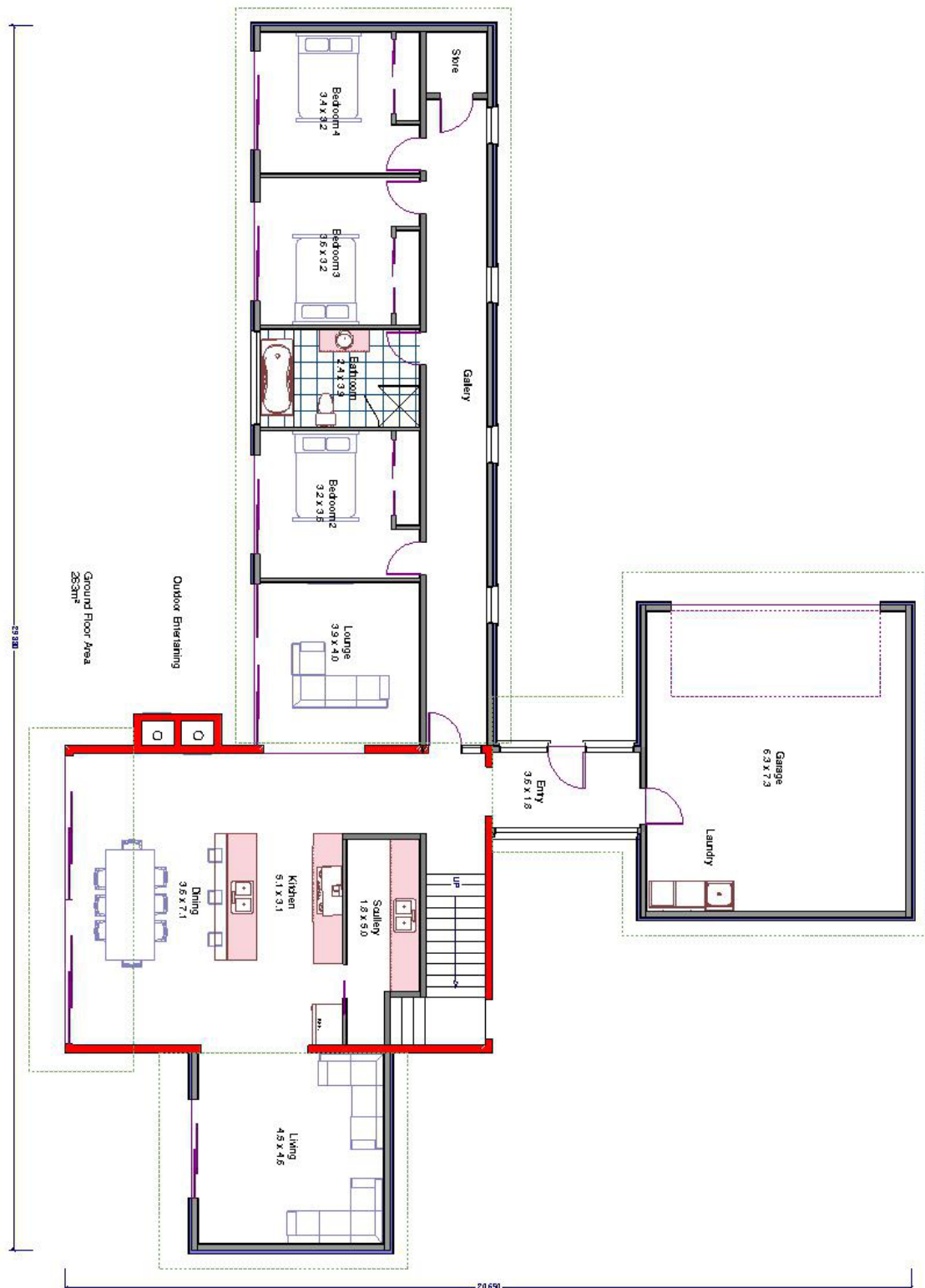


With a comprehensive range to cover all tastes, the Breen Lifestyle Series provides sophistication to spacious living and its functional designs are perfectly suited to families that enjoy comfy indoor and outdoor lifestyles.

Contemporary, functional and fun. Mix it up with different claddings to produce an original home. Desirable for those wanting something 'a bit different'.



*A house is made of walls and beams, A home is built with love and dreams.*



First Floor Area  
59m<sup>2</sup>

